

TELESCOPIC BOOM LIFTS

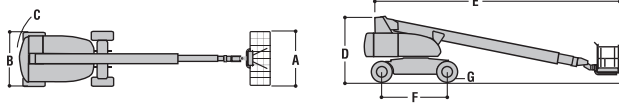
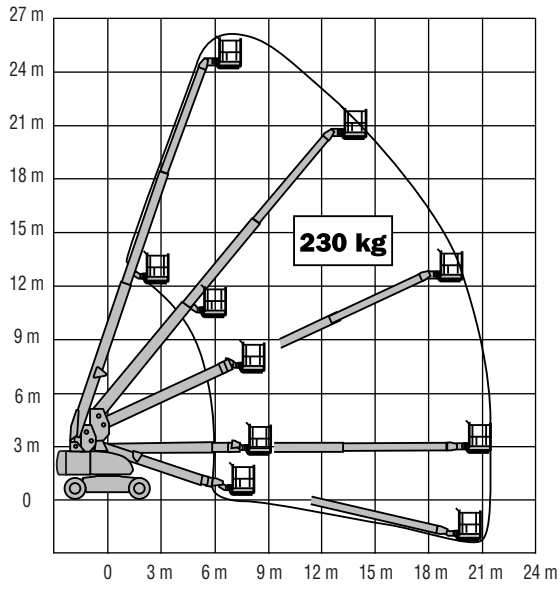
| | 800S | 860SJ |
|-----------------------------------|------------------------|------------------------|
| Platform Height | 24.38 m | 26.21 m |
| Horizontal Outreach | 21.64 m | 22.86 m |
| Swing (Continuous) | 360° | 360° |
| Platform Capacity – Unrestricted | 230 kg | 230 kg |
| Platform Rotator (Hydraulic) | 180° | 180° |
| Jib – Overall Length | – | 1.83 m |
| Jib - Range of articulation | – | 130° (+70°/-60°) |
| A. Platform Size | 0.91 m x 2.44 m | 0.91 m x 2.44 m |
| B. Overall Width | 2.49 m | 2.49 m |
| C. Tailswing (working condition) | 1.42 m | 1.42 m |
| D. Stowed Height | 3.05 m | 3.05 m |
| E. Stowed Length | 11.35 m | 12.19 m |
| F. Wheelbase | 3.05 m | 3.05 m |
| G. Ground Clearance | 0.30 m | 0.30 m |
| Gross Vehicle Weight ¹ | 14,820 kg | 16,490 kg |
| Maximum Ground Bearing Pressure | 5.6 kg/cm ² | 6.5 kg/cm ² |
| Drive Speed 2WD | 5.6 km/h | 5.6 km/h |
| Drive Speed 4WD | 5.6 km/h | 5.6 km/h |
| Gradeability 2WD | 30% | 30% |
| Gradeability 4WD | 45% | 45% |
| Tyres | 15 - 625 Foam Filled | 15 - 625 Foam Filled |
| Turning Radius – Inside | 3.66 m | 3.66 m |
| Turning Radius – Outside | 6.86 m | 6.86 m |
| Diesel Engine - Deutz F4M2011L | 48.5 kW | 48.5 kW |
| Fuel Tank Capacity | 117 L | 117 L |
| Hydraulic Reservoir | 151 L | 151 L |
| Auxiliary Power | 12V DC | 12V DC |

¹ Certain options or country standards will increase weight.

Specifications may change to meet country standards or with the addition of optional equipment.



JLG MODEL 800S



JLG MODEL 860SJ

